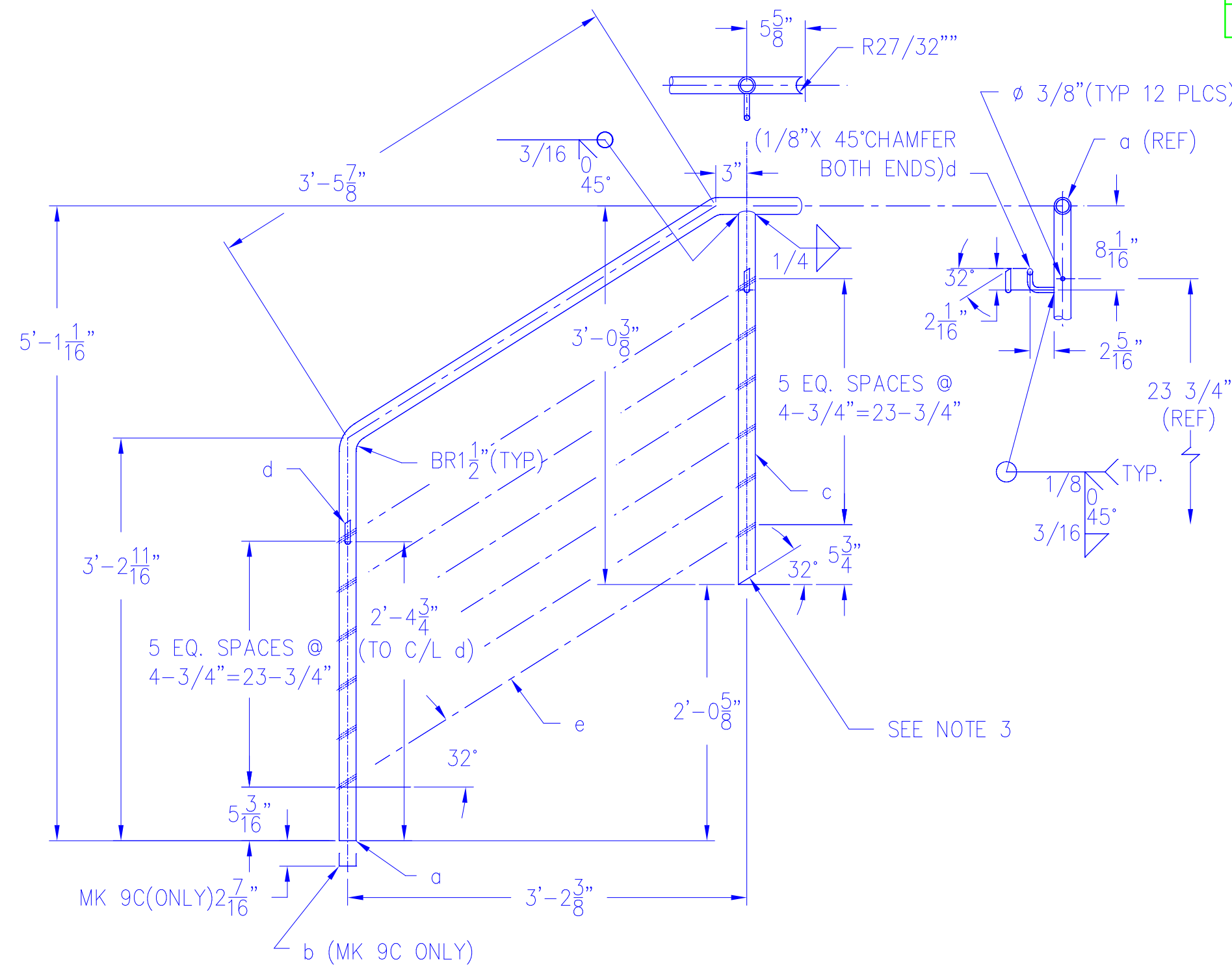


FNAME

REVDATE

USER

REVISIONS				
ZONE	REV	DESCRIPTION	DATE	APPROVED



QTY/MK		DESCRIPTION	IN.	COMMENTS		
9C	9B	9A	detail	STAIRRAIL		
1	1	1	a	PIPE 1 1/4"(A53)	92	SCHEDULE 80
1			b	PIPE 1 1/4"(A53)	95	SCHEDULE 80
1	1	1	c	PIPE 1 1/4"(A53)	38	SCHEDULE 80
2	2	2	d	BAR RD 1/2"DIA	6	ASTM-A36
6	6	6	e	CABLE ASSY	ø3/16"	SEE NOTE 5

- NOTES:
- 1) UNLESS OTHERWISE NOTED, ALL FRACTIONAL DIMENSIONS TO ADHERE TO A TOLERANCE OF +/- 1/8".
 - 2) REMOVE ALL BURRS AND SHARP EDGES.
 - 3) ALL PIPE ENDS TO HAVE 3/16" X ø45 CHAMFER FOR FIELD BEVEL WELDS.
 - 4) ALL WELDING IN ACCORDANCE WITH THE LATEST EDITION OF AWS D.1.1 GRIND SMOOTH ALL WELDED CONNECTIONS.
 - 5) CONSISTS OF 3/16" S.S. CABLE (TYPE 316, 1x19) WITH BALL END TERMINAL ONE END & THREADED TERMINAL ON OTHER. USE ANGLE WASHER, STL. HX HD NUT & CAP NUT. LENGTH TO BE DETERMINED.
 - 6) POWDER COAT FINISH.

SCALE FACTOR: 12

(THREE REQ'D) STAIRRAIL MK.9A (SHOWN)
 (THREE REQ'D) STAIRRAIL MK.9B (OPPOSITE)
 (ONE REQ'D) STAIRRAIL MK.9C (SAME AS MK 9A EXCEPT AS NOTED AT BOTTOM OF detail a)

WRIGHT MANUFACTURING, LLC
 7474 S.E. Johnson Cr. Blvd. Portland, OR 97206
 503-774-9689 FAX 503-774-9691
 JOB:
 DRAWN BY: W. GEIER - CADDHAUS
 DATE: 10/26/06 DWG.# 9 SHT: 1 of 1
 SCALE: 1"=1'